

annual  
report

2024



arquitetura  
na periferia



# arquitetura na periferia

**our actions prioritize the strengthening of communities through women's protagonism** and self-led initiatives as strategies for consolidating citizenship, promoting environmental, economic and social development, combating poverty, among others.

our work aligns with the UN Sustainable Development Goals (SDGs), particularly SDGs 5, 11, and 13 – **advancing gender equality, sustainable communities, and climate action through community-driven practices.**

**anp** threads connections between women and territory, strengthening paths toward autonomy in **designing, planning, and building communities.**

rooted in collective strength, we are a non-profit organization, formally established in 2018 as **IAMÍ - Institute for Women's Advisory and Innovation**

**our mission** is to generate and share information and knowledge, nurturing community bonds through women's protagonism in all its diversity

## 2024 was a powerful year

we expanded our reach, opened new paths for action, and – above all – strengthened the autonomy of women in historically marginalized territories, fostering systemic change and long-term resilience.

**Over 2,000 people were directly impacted,** through housing renovations, capacity-building activities, and the consolidation of projects such as **AnP BIO** and **AnP CO** – initiatives that reaffirm our commitment to environmental and social justice.

We also celebrated new partnerships and recognition in prestigious awards, such as the **Ammodo Architecture Award** and the **Periferia Viva Award**.

It was also a year of great challenges. The expansion of our activities demanded more from our team and institutional structure. Securing resources to keep our projects alive and moving forward while staying grounded in our core values – a deep commitment to **listening and care** – required persistence, restructuring, and constant dialogue.

We continue learning, with courage and collectivity, how to sustain our practice within an increasingly complex social and environmental context.

**To all the participating women, the tireless team, the volunteers, the monthly supporters and the partner institutions: our deepest gratitude.**

**together, we remain committed to co-creating more fair and empowering spaces – with care, resilience and resistance.**





# 2024





highlights 2024



beginning of partnership with municipal government



mobilization of technical advisory groups



start of the technical advisory groups



construction: emily's bedroom completed



training module: plastering



visit to the Mariana Traditional Trades School



highlights 2024



jul

inaugural class “The community, through women, is not extinguished”



aug

graduation of women from construction training programs



sep

hands-on building workshops



oct

community joint-efforts: earthen floor installation



nov

housing project designs handed over



dec

joint effort with corporate volunteering





Brazil

MG

Vespasiano

Ribeirão  
das Neves

Belo Horizonte

- Dandara
- Eliana Silva
- Paulo Freire
- Terra Nossa
- Novo Aarão Reis
- Irmã Dorothy
- Nelson Mandela
- Vila Santa Rita
- Luar da Pampulha
- Cidade Jardim Taquaril
- Águas Claras
- Alto Vera Cruz
- Taquaril
- Camilo Torres
- Gávea II
- Barragem Santa Lúcia
- Distrito Industrial do Jatobá

**17** communities engaged



**iamí impact  
2024**



2,044



people  
reached

1,492



hours of capacity-  
building activities

832



square meters (m<sup>2</sup>) of  
space improvements

272



women engaged  
advised and/or trained

124



psychological care  
individual and collective



**impact overview**  
**2024**



our projects

The logo for 'anp bio' is set within an orange rounded rectangle. It features a small icon of a hand holding a plant sprout to the left of the text 'anp bio' in a bold, sans-serif font.

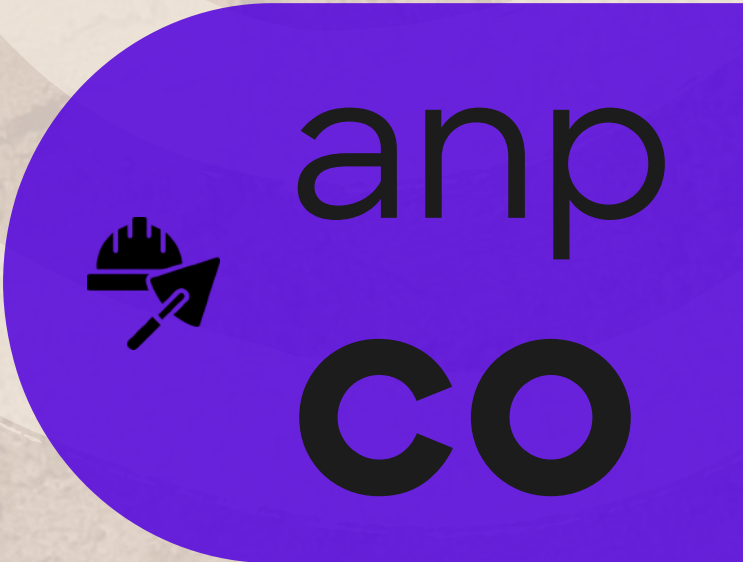
studies and applications of **sustainable, earth-based** construction techniques through community joint-efforts to transform collective spaces

The logo for 'anp at' is set within a pink rounded rectangle. It features a small icon of a house with a checkmark inside to the left of the text 'anp at' in a bold, sans-serif font.

community-based **technical advisory** for housing improvements

The logo for 'anp social' is set within a black rounded rectangle. It features a small icon of a head with a heart inside to the left of the text 'anp social' in a bold, sans-serif font.

**mental health care** with collective and individual psychological assistance

The logo for 'anp co' is set within a purple rounded rectangle. It features a small icon of a house with a checkmark inside to the left of the text 'anp co' in a bold, sans-serif font.

**skill-building processes** with women in construction techniques, and **full room renovations** led by them





# anp at

The project aims to improve housing for women in marginalized territories, through a process where they are introduced to practices and techniques of project design and construction planning, fostering autonomy and reclaiming agency over their built environment



## 84

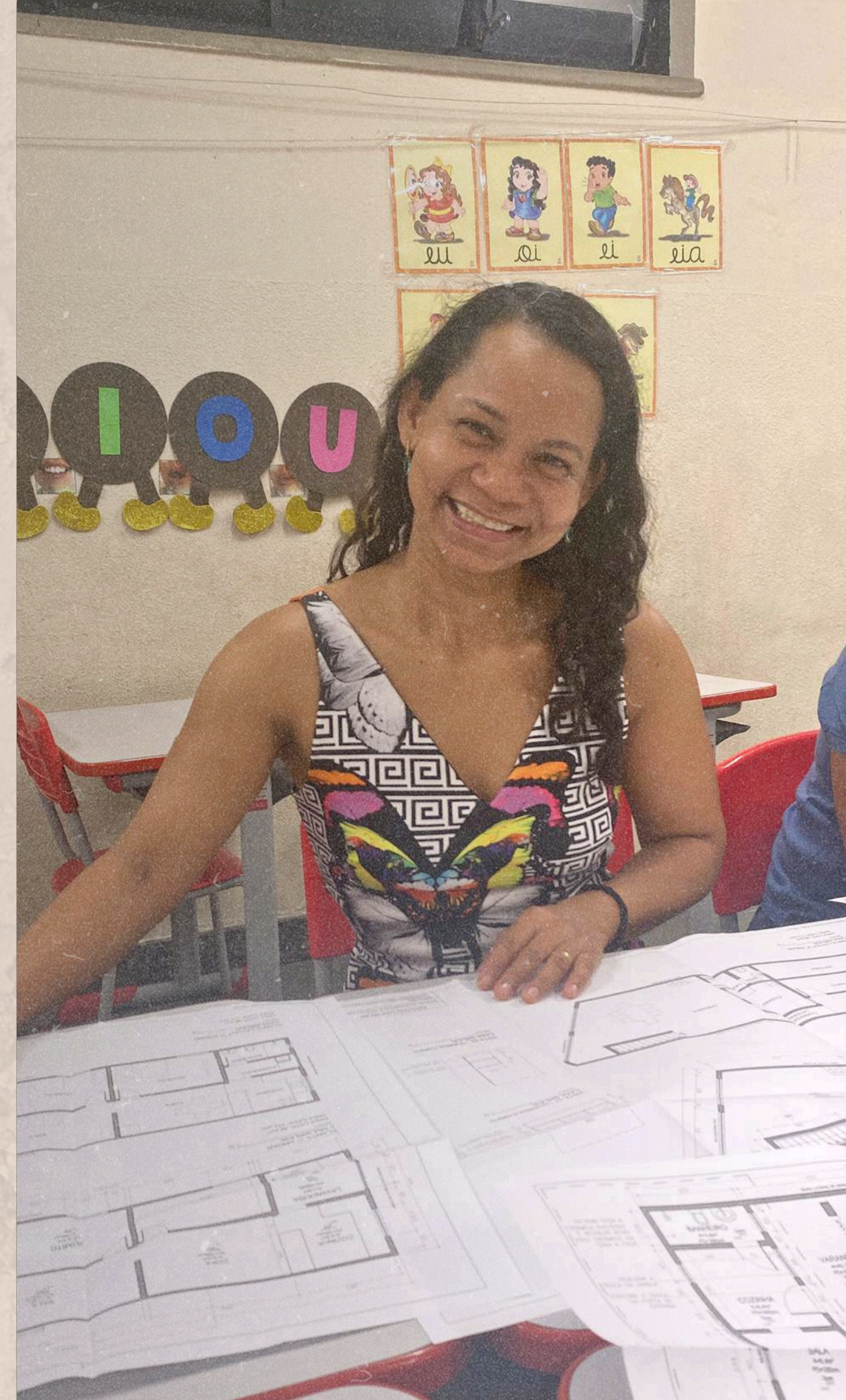
people directly impacted

## 26

women trained by technical advisory

## 23

houses with housing improvements







Meet our 2024 **technical advisory** groups

05

community  
women's groups



NOVO AARÃO REIS



TERRA NOSSA



DANDARA



VALE DO JATOBÁ I e II

**AnP AT** is structured as an annual cycle of collective gatherings, where each meeting corresponds to a step in the co-creation of home improvement projects. Beyond the technical process, the journey becomes a space for situated learning, mutual care, and the strengthening of bonds among women and their communities.





Did you know that our technical assistance method has been recognized as a **social technology** by the Banco do Brasil Foundation? Below are some indicators from the **collective planning and hands-on** stages:

215

hours in collective planning workshops

108

planning workshops

collective planning



hands-on workshops

138

hours in hands-on training

23

hands-on workshops

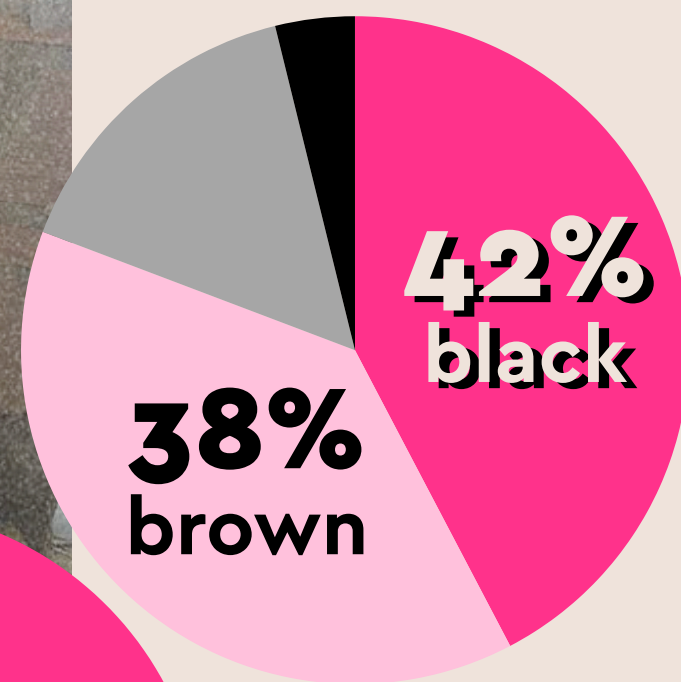






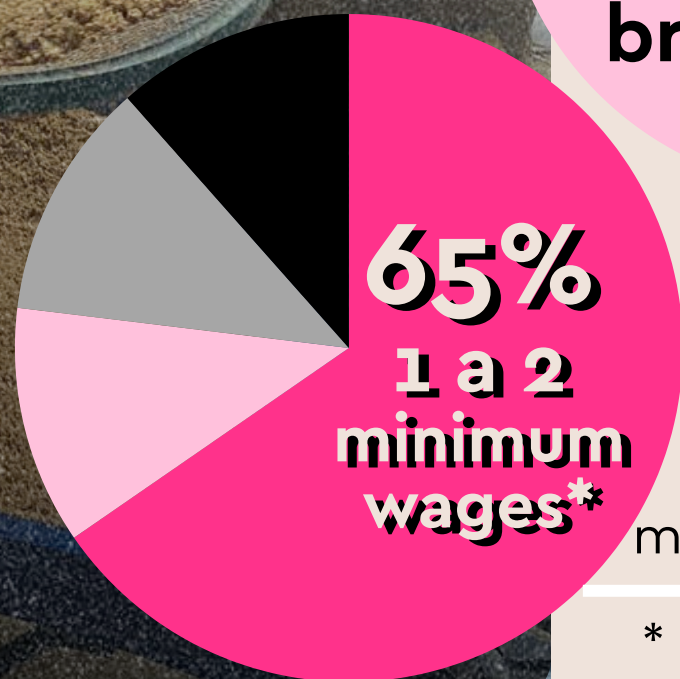
profile of the  
participants

participants  
racially identify as

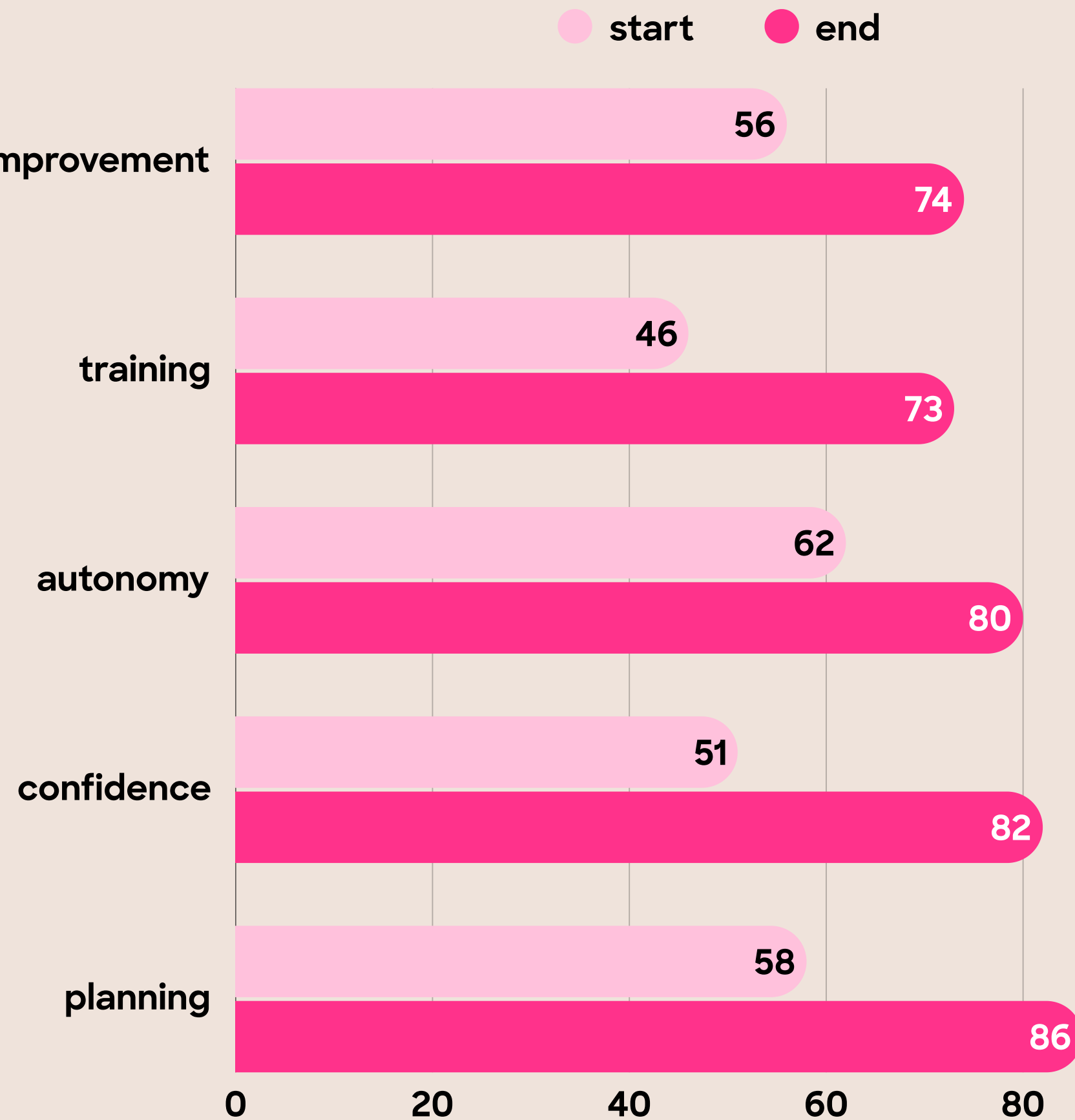


family has a  
monthly income of

\* U\$ 251 - U\$ 502



we use **reflective self-assessments** at the start and end of each advisory cycle, inviting women to recognize their growth in knowledge, autonomy, confidence and planning capacity



indicators  
anp at 2024





# stories

*Since I have autistic daughters and the house was very dark, they had trouble learning - their grades were low. But after the team came through the project, and replaced the roof, their grades started to improve - from 2.5 they went to 7.5, 8.5, even 9.5...  
Juliana*

*It's great to see the happiness on the women's faces as they watch their homes being transformed. That's the best part. The most fulfilling. Being able to take part and learn - it's an incredible experience.  
Rafaela*



# anp bio

The project brings together women to explore sustainable, earth-based construction techniques and apply them in the transformation of a community space. Through hands-on learning and collective care, the project reconnects traditional knowledge, ecological awareness, and material practice.



# 449

**impacted  
people**

# 50

**hours of hands on  
workshops and community  
joint-efforts**

# 7

**hours of theoretical classes,  
meetings and lectures with  
invited collectives**







## anp **bio** activities

- **Pau-a-pique and Adobe brick workshop** – Field trip to Mariana (Traditional Trades School)
- **Community joint-effort** – Field trip to Mariana (Traditional Trades School)
- **Inaugural class "Community, through the woman, is not extinguished: Glimpses into the cosmology of the traditional Central African Bantu-Kongo people"** with Lisandra Mara
- **Visit** to the Ecological Brick Factory and **hands-on workshop**
- **Online class** with the VACA Program (Mexico)
- **03 earthen floor workshops**
- **04 renovation community joint-efforts**







Discover the impact of  
**bioconstruction** in the Paulo  
Freire community in 2024

**renovated space**  
**Paulo Freire**  
**Cultural Center**



earthen floor construction



joint efforts: general repairs + floor testing



joint efforts: roof repairs + final floor layer



joint efforts: earthen baseboard installation

**351**

**community residents**  
**impacted**





# earthen floor







# stories

*Bioconstruction takes me back to my childhood - I even get emotional just talking about it because it brings up so many beautiful memories. There's no dust to cause allergies, there's no skin reactions because there's no chemicals... wow, it's really good! I love AnP BIO, I love working with the earth!*

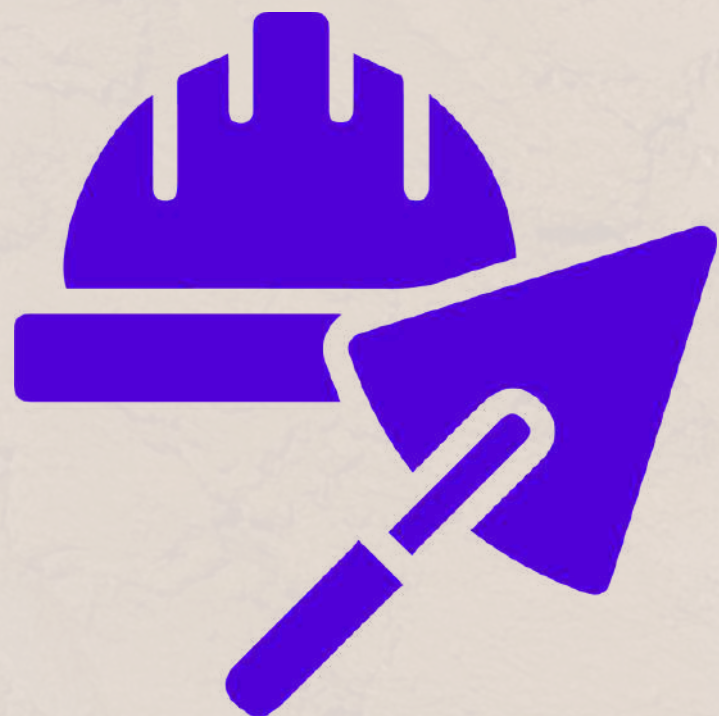
*After I started working with the earth, my mental health improved a lot. Because it really moves us - bioconstruction lifts us — it reveals that we are capable of far more than we believed!*

**Claudiana**



# anp co

Hands-on training in construction trades, enabling women to lead improvements in their homes and communities through applied, context-sensitive learning. Classes are held inside the homes of other women – spaces that become both classrooms and construction sites for transformation



# 1.038

hours of  
training classes

# 60

people  
impacted

# 33

trained  
students







Meet our 2024  
thematic modules

# 05

training modules



counter-flooring



masonry



plastering



ceramic floor



painting





# 06

rooms fully  
**renovated**

**complete room renovations**  
led by the women participating  
in our training program



construction team

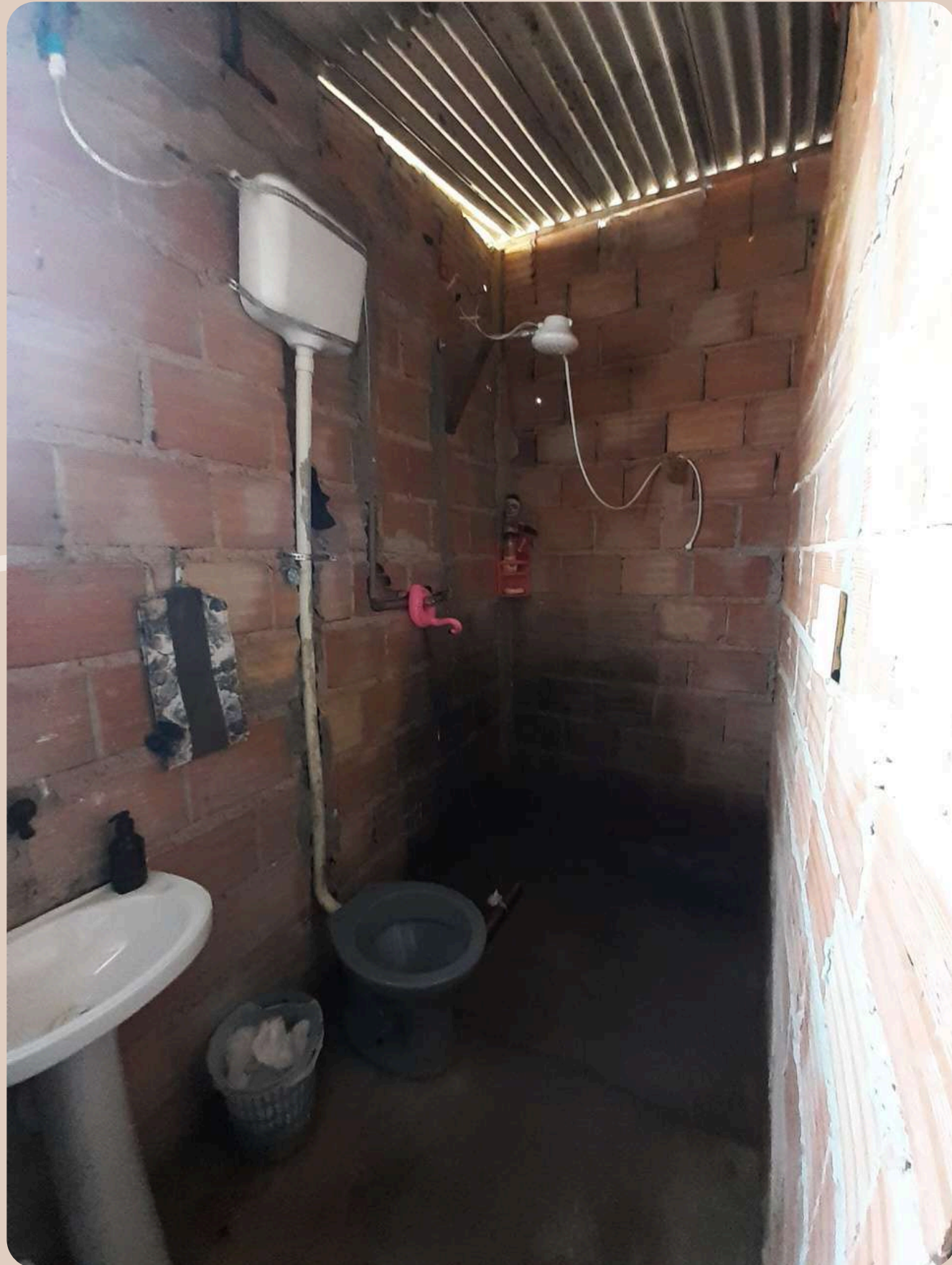
Check out the  
**before** and **after**  
pictures of the rooms







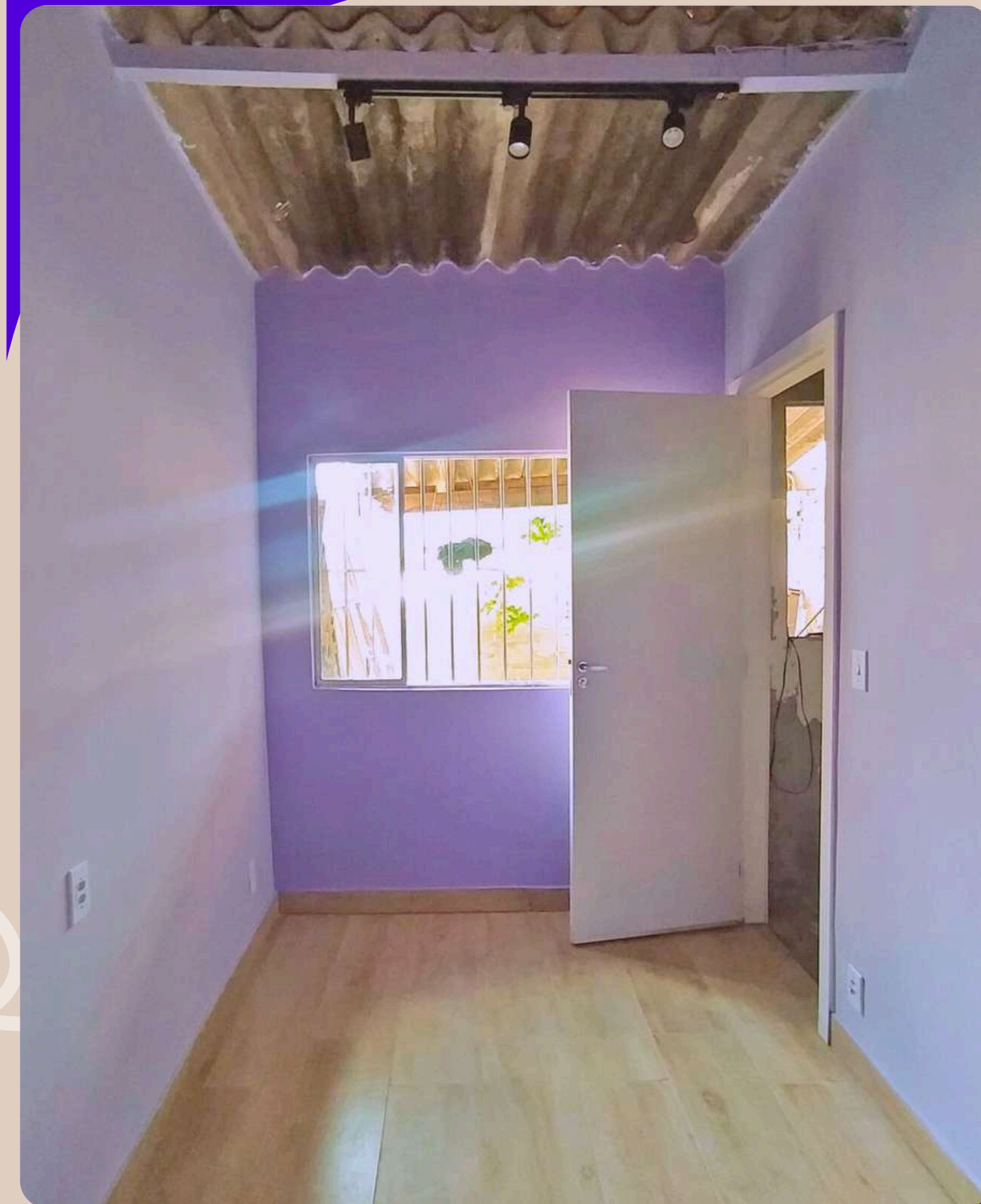
## 01 | before and after bathroom







## 02 | before and after **bedroom**







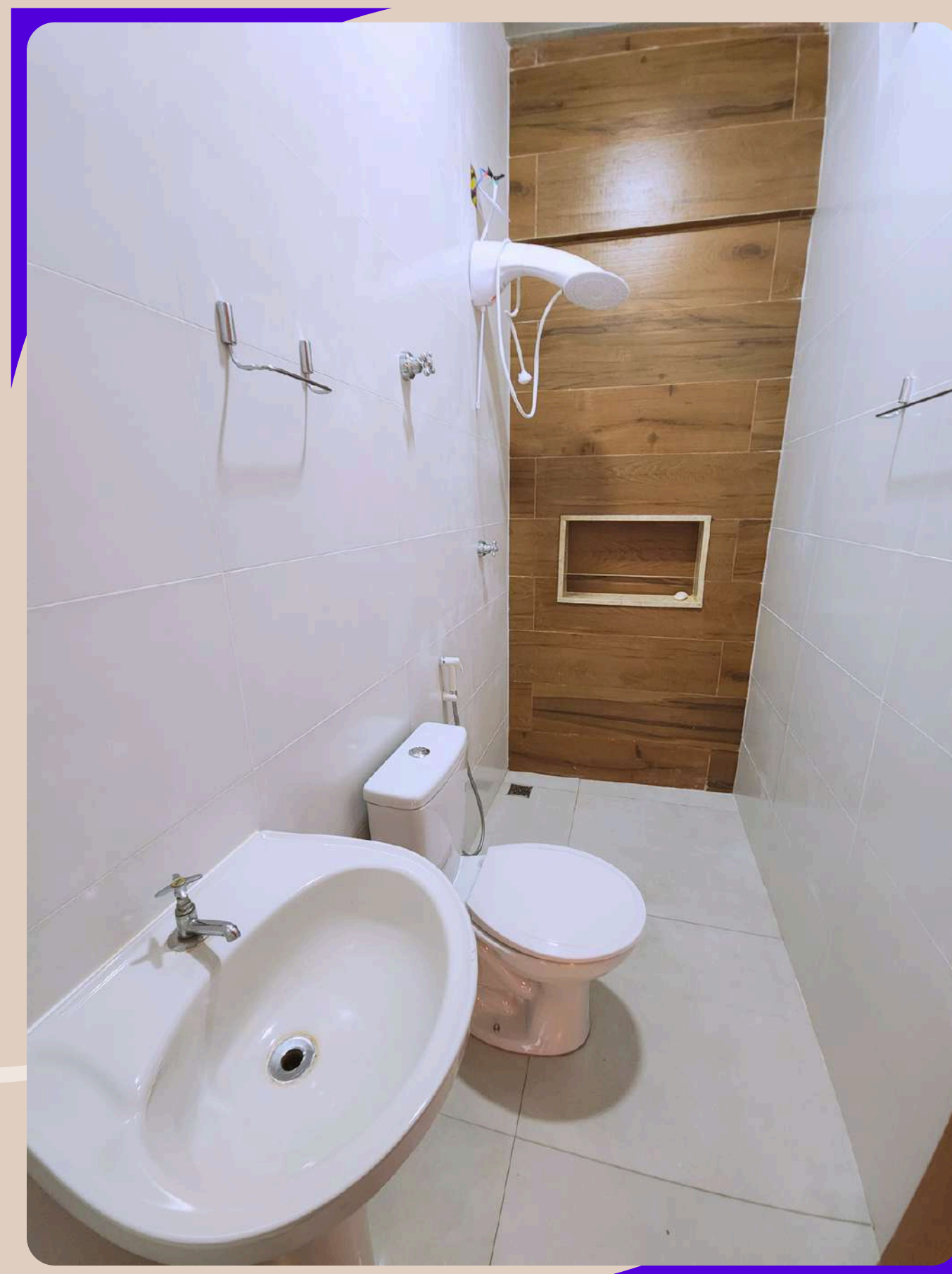
### 03 | before and after **bedroom**







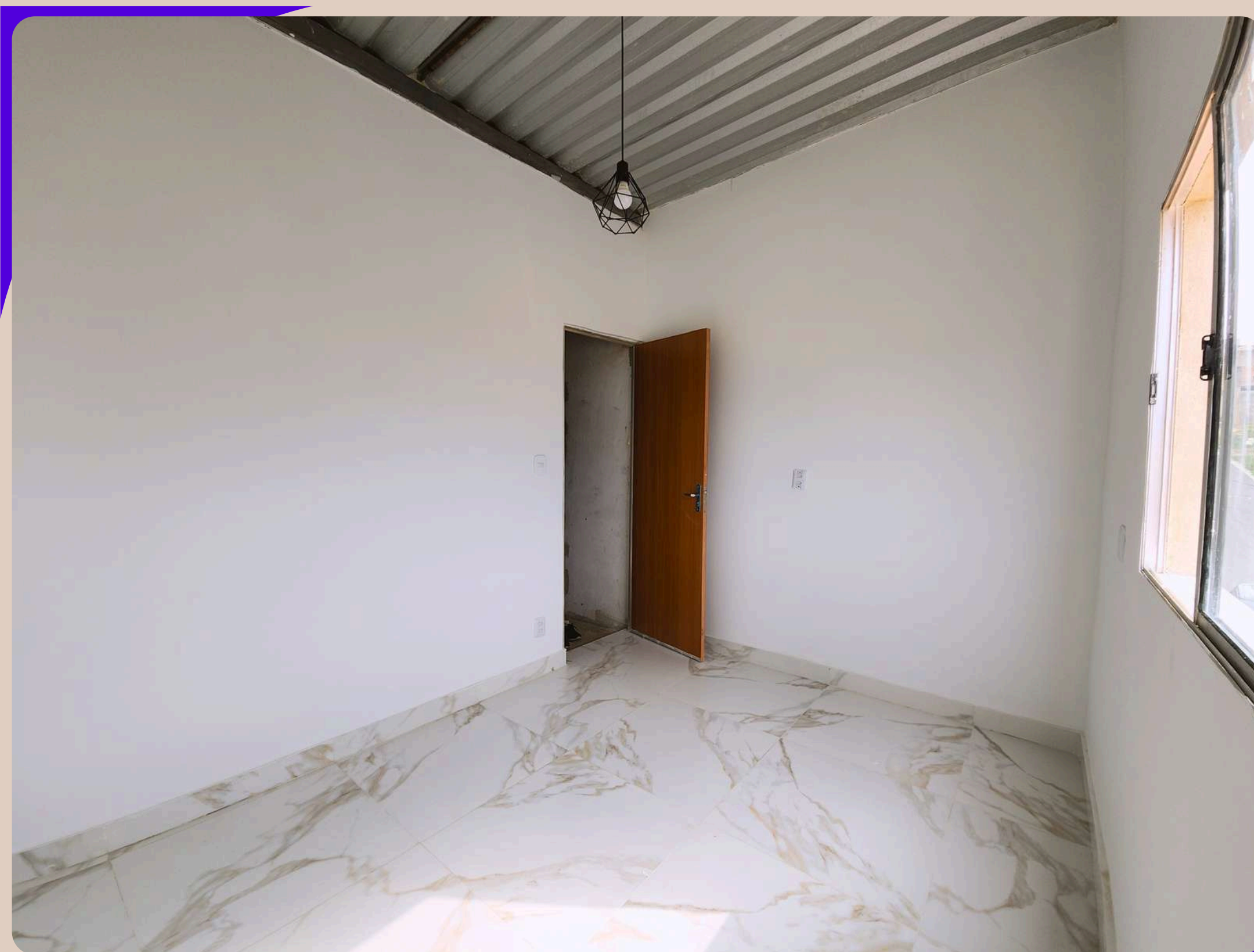
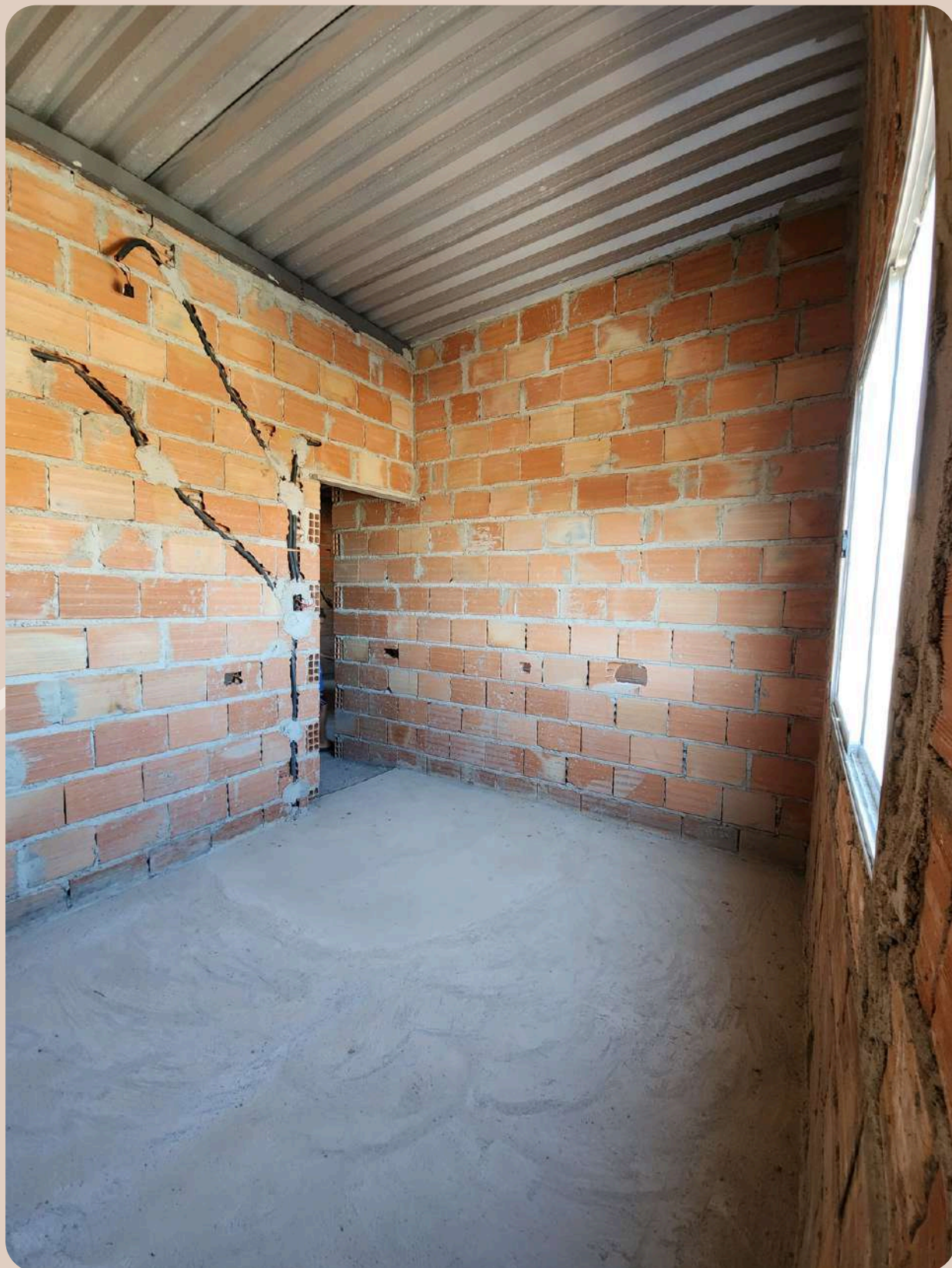
## 04 | before and after bathroom







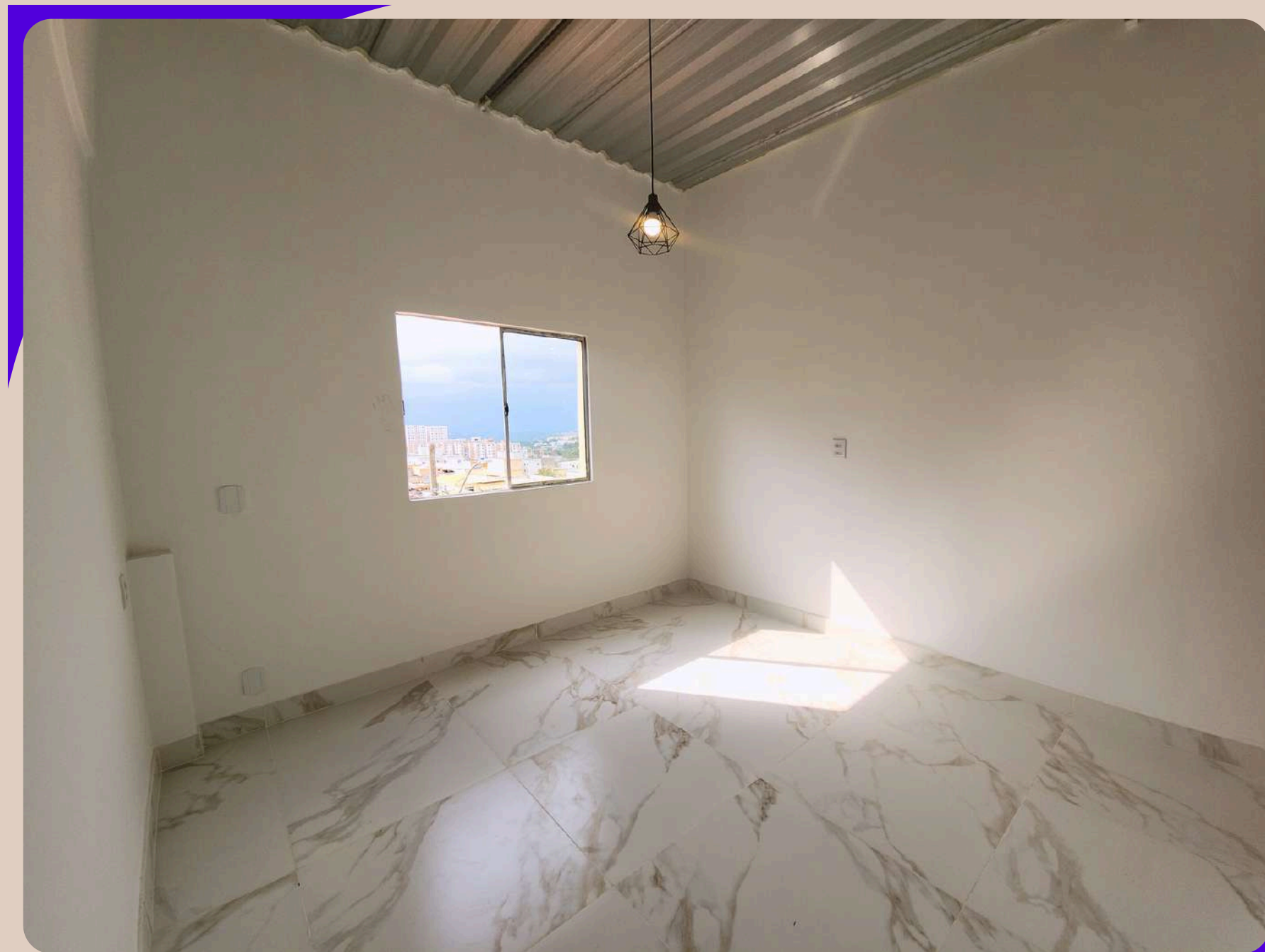
## 05 | before and after **bedroom 1**







## 05 | before and after **bedroom 2**







# indicators anp co 2024

qualitative indicators extracted from the questionnaires we conduct with the participants at the end of each module, based on their own perceptions.

## profile of the participants

the women racially identify as

45%  
brown

55%  
black

they have an income of

\* U\$ 133 - U\$ 265

64%  
0.5 a 1  
minimum  
wages\*

content presented

98

module duration

96

didactic material offered

99

location of the module

97

teacher's didactics

100

support offered by the project team

100

0 20 40 60 80 100





*It is a very important project for us women - it shows us that we're capable of much more than we ever imagine.*  
**Daniela**

# stories

*I'm just grateful to the entire project team. The teacher's approach is excellent. I hope this project continues in the coming years and can reach even more women - building autonomy and freedom along the way.*  
**Fernanda**

*It's the beginning of a wonderful dream. I learned so much—truly a lot—that I can now do on my own. It's a kind of growth, even on a professional level. And independence, you know? There's nothing better than being able to say you know how to do something that's extremely difficult.*  
**Marcele**



# anp social

The initiative offers psychosocial support to women who are currently part of the project or have participated in past actions, forming a network of care.



Our team of volunteer psychologists facilitated group activities with the participants, based on their specific needs, and were also available for individual consultations throughout the year.





## A shared experience by psychologist

### Daniela Gonzaga:

*The social reality of countless people is sickening, and faced with this realization, I asked myself: what can I do to contribute? So, even if with small steps, I decided I could be useful to society by engaging in volunteer work.*

*My initial idea of AnP was of a project that trained women from peripheral communities to build or renovate their homes. But by actively participating, I realized that beyond construction skills, within a space of mutual exchange, these women also had the opportunity to build or rebuild not only their homes but also their lives.*

*Being part of this context, I could see great possibilities for both social and personal transformation. I also began to understand that my role in the project went far beyond offering psychological support. From the very first meeting with the group of women, as we worked with affective memories, it became clear that some experiences resonated among us — and from that connection came the possibility to strengthen individual and collective capacities and move forward together.*

# stories

*As I became more involved in the project, I recalled an inspiring thought by the great educator Paulo Freire, who said:*

***"You have to hope, but hope from the verb 'esperançar' (to have hope); Because there are people who hope from the verb 'esperar' (to wait). And hope from the verb 'esperar' is not hope, it's waiting. Hope and get up, hope and go for it, hope and build, hope and don't give up! Hope and carry on, hope and get together with others to do things differently..." "***

**Paulo Freire**







In 2024, we also established partnerships to distribute **care items to the women** participating in AnP.

813

sanitary pads

were distributed in partnership with the **Red Cross**



129

people benefited

from the distribution of **food and personal hygiene kits**, made possible through a partnership with **Aura da Luta**, a donation of R\$11,030.38 and volunteer action from **Cadence**.

28

people benefited

from the distribution of **10 holiday kits** in partnership with **Construtora Uni**





events, lectures, conversation circles

1229 people in the audience

31.5 total hours/  
classes

18

events

- ▶ Welcome meeting – 2024 team and volunteers
- ▶ Conversation Among Women: All About individual microentrepreneur – with Grace França
- ▶ Building Best Practices with Diversity [Online training – Team + Akasulo]
- ▶ **REARC Symposium Architectures of Planetary Well-being**
- ▶ **Production Studies International Conference (TF/TK)**
- ▶ **Photography Workshop 1 with Denise Santos (Erro99 Festival)**
- ▶ **Photography Workshop 2 with Bruno Figueiredo (Erro99 Festival)**
- ▶ **Diversity: building bridges [Action with project participants + Akasulo]**
- ▶ Lecture on Women's Day AMPLO
- ▶ Lecture on the Federal Revenue Service – Clara Ciotto
- ▶ Participation at the Ministry of Culture in Brasília – Cheyenne Miguel
- ▶ 2nd International Seminar: NATUREZA POLÍTICA – Practices in Movement  
Panel: Challenges in mobilizing and raising awareness of environmental issues among residents of marginalized communities
- ▶ **National Housing Week – CAU/BR 2024 Lecture**  
**Panel: Technical Assistance as a Tool to Empower Women: An Overview of the Architecture on the Periphery Project.**
- ▶ Contemporary Architecture Meetings – Ateliê Américas | UFMG School of Architecture
- ▶ Online Class – Postgraduate Program – Escola da Cidade
- ▶ Online Class – UFRGS – Clara Ciotto
- ▶ Inaugural Class – ATAU+E UFPB (Specialization in Technical Assistance in Architecture, Urbanism, and Engineering)
- ▶ **Workshop with ATAU+E UFPB students and women from the NGO Amigas Solidárias in João Pessoa**





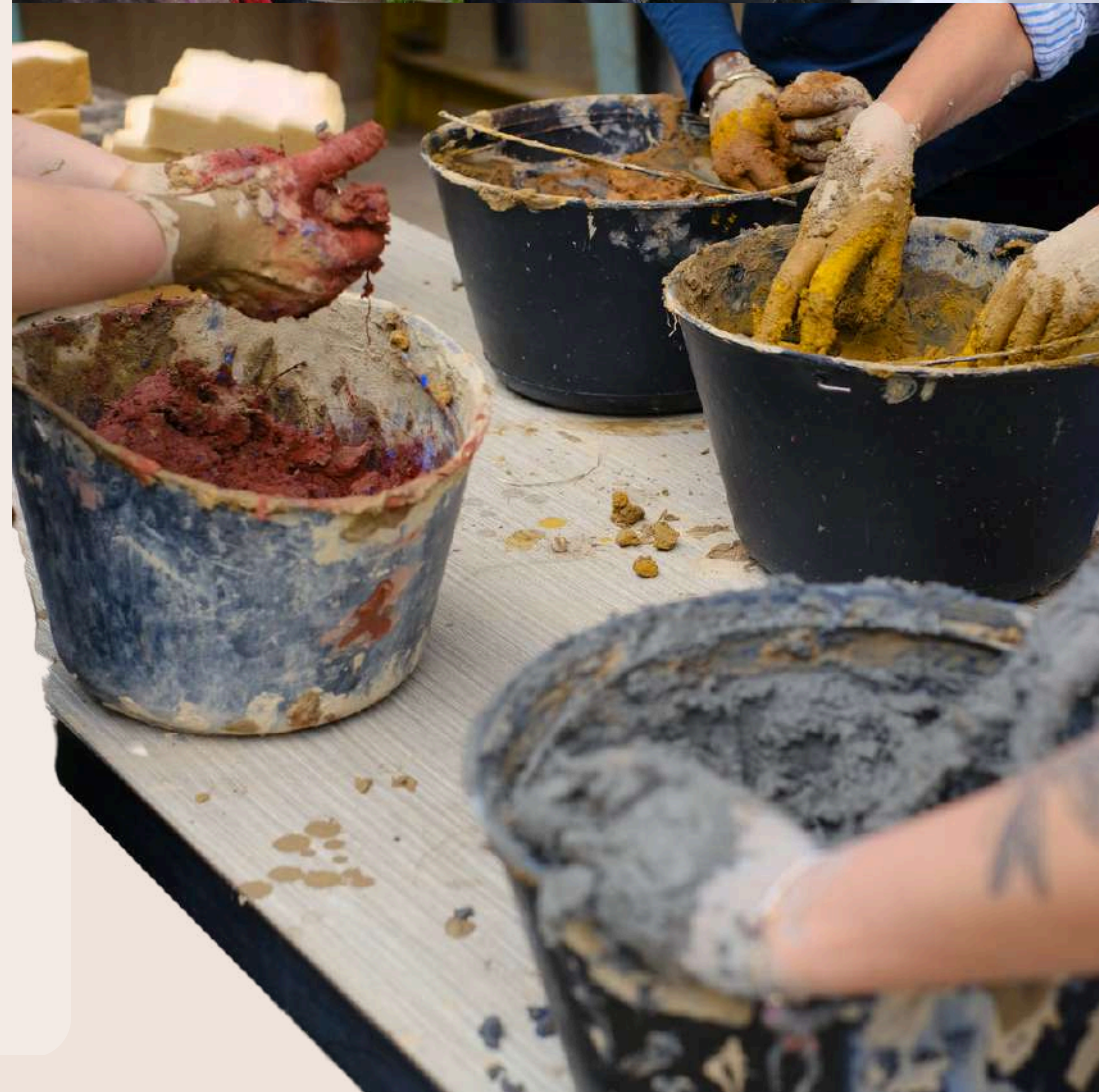
## **REARC: School of Schools**

Tenjo, Colombia

In February, we had the unique opportunity to gather with other 14 amazing projects supported by the Re:arc Institute.

The meeting took place at Organizmo, one of the supported institutions, where we took part in several discussion circles, hands-on workshops and shared valuable learnings.

This experience was profoundly inspiring – sparking new reflections, connections, and pathways to strengthen our practices in dialogue with a global network of community-rooted initiatives



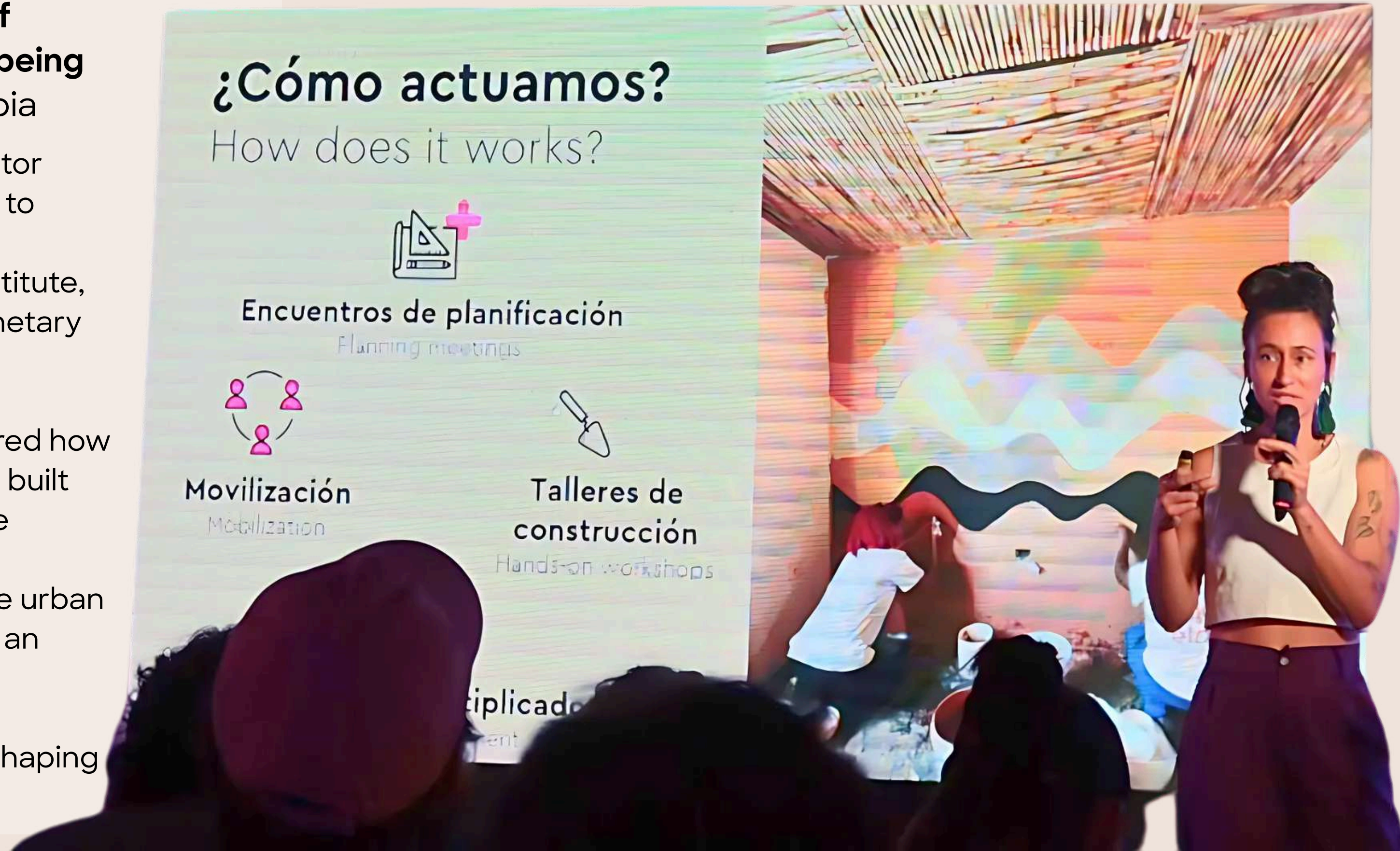




## **REARC: Symposium Architectures of Planetary Well-being** Bogotá, Colômbia

Later that month, our director Carina Guedes was invited to speak at the symposium organized by the Re:arc Institute, titled “Architectures of Planetary Well-being”.

Representing AnP, she shared how community-led processes, built through care and collective autonomy, are reshaping architectural practice in the urban peripheries of Brazil. It was an honor to contribute to this gathering of practitioners, thinkers, and movements shaping regenerative futures.



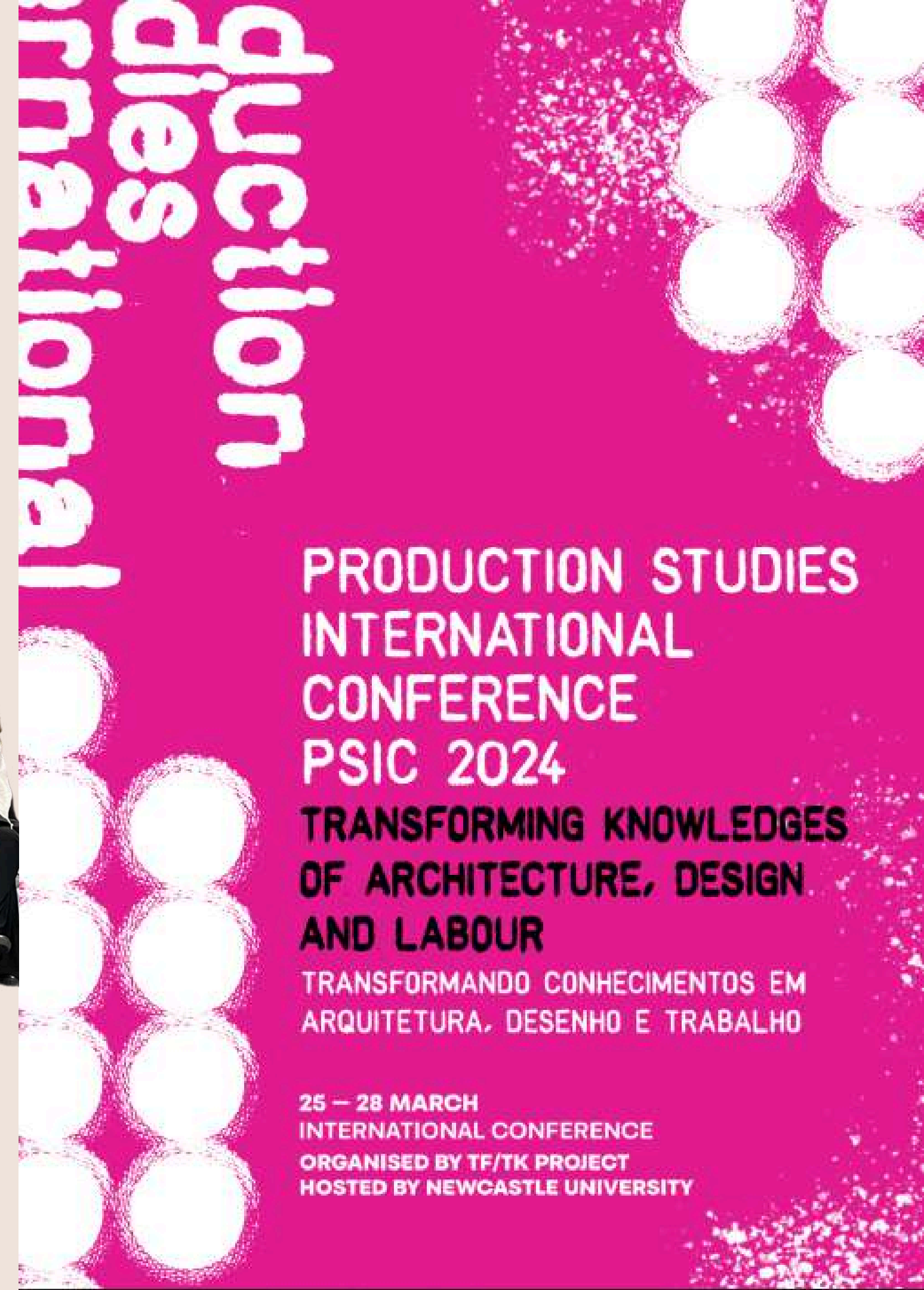




## **PSIC: Production Studies International Conference**

Newcastle, England

Invited by the TF/TK research project, of which we are affiliated researchers, we participated in the organization and as panelists in the panel “Her Know How: Gendered struggles over skill in the production of space”.



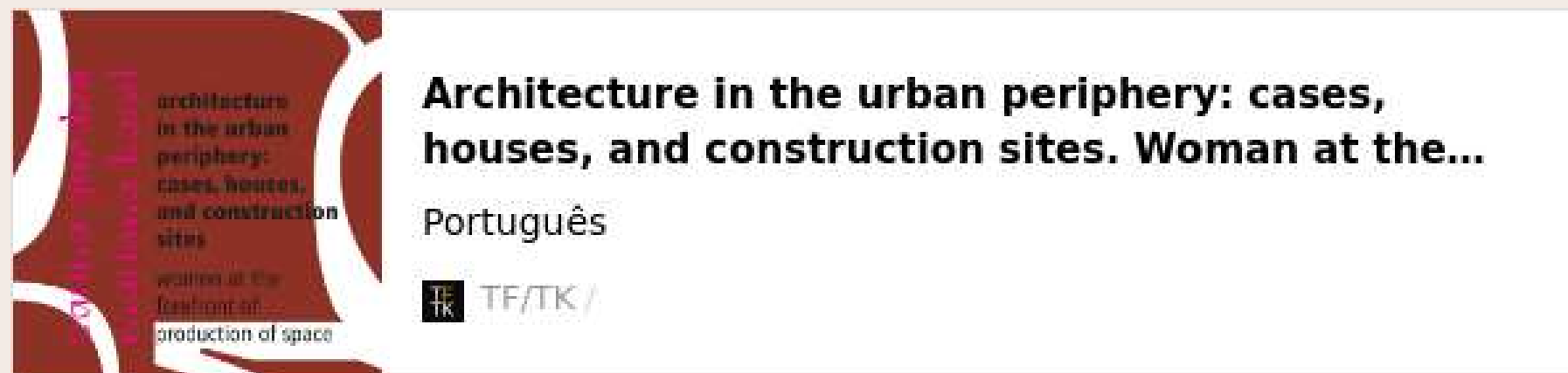




## Booklet "Architecture in the urban Periphery: cases, houses, and construction sites. Woman at the forefront of production of space"

During the PSIC conference we had the great honor of launching this booklet which, in addition to telling the readers about AnP's working method, also tells the stories of some of the women who have participated in the project.

This booklet is one of the products of the TF/TK research project, and it's available for download at:



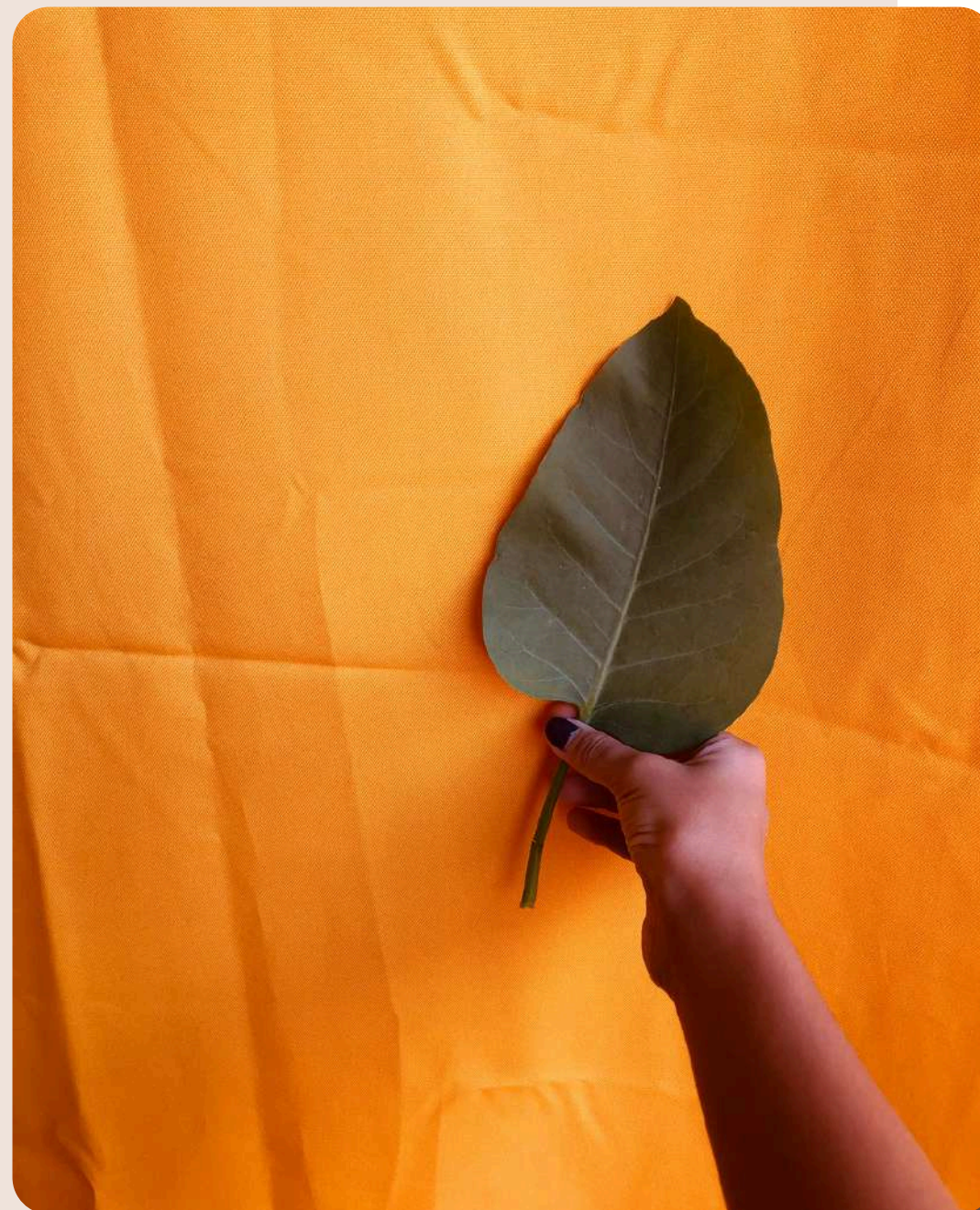




## **Photography Workshop: The Cell Phone as a Creative Tool**

Paulo Freire Cultural Center

In May, in partnership with Erro99 Festival, we held two photography workshops for residents of the Paulo Freire community and surrounding areas, focusing on women and youth.







17

# impacted women







## CAU/BR Housing Week Technical Assistance as a tool for Women's Empowerment: an overview of the Architecture in the Periphery project Fortaleza, Brazil

Also in August we were invited to present our work at the 4th Housing Week in Fortaleza.

We joined the panel “Popular Technical Assistance and Social Movements: Challenges in Self-managed Housing Production” alongside Coletivo Levante (Belo Horizonte) and NGO Peabiru (São Paulo).







## ATAU + E. UFPB and NGO Amigas Solidárias João Pessoa, Brazil

In November, we gave the inaugural class for the ATHIS Residency Program at the Federal University of Paraíba in João Pessoa. Along with the lecture, we visited the headquarters of the Amigas Solidárias association in the Aratu community and shared some key steps of ANP's technical assistance methodology with local women and students.



## DO DIREITO À MORADIA À ATHIS

→ 2016 a 2022: DESMONTE DAS POLÍTICAS VOLTADAS PARA A POPULAÇÃO DE BAIXA RENDA E FIM DO MINISTÉRIO DAS CIDADES

→ 2023 - ATUAL: RETOMADA DAS POLÍTICAS PÚBLICAS  
Recriação do Ministério das Cidades e criação da Secretaria Nacional de periferias. Retomada do programa Minha Casa Minha Vida e Programa Periferia Viva.



Curtido por pretamilonaria2.0 e outras pessoas  
lulaoficial Hoje foi o lançamento do Programa Periferia Viva, o maior esforço de urbanização em favelas da história do Brasil, com R\$ 63 milhões até 2026 no programa priorizando a transição de Risco e a garantia de CE para periferias. O dia de hoje é o dia para todo o Brasil.

# Periferia Viva





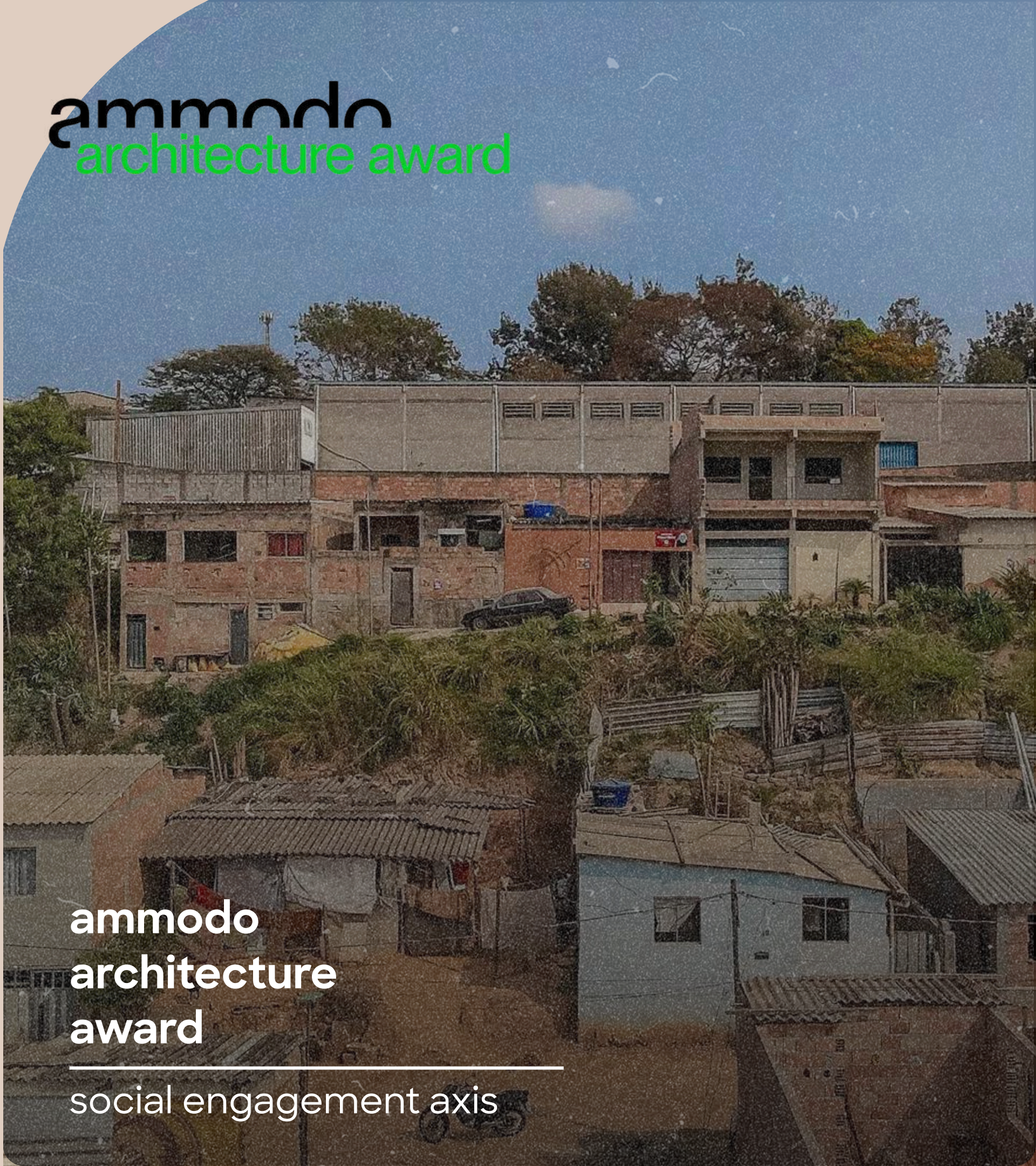


awards

periferia  
viva  
award

technical advisory axis

PRÊMIO  
**PERIFERIA  
VIVA 2024**

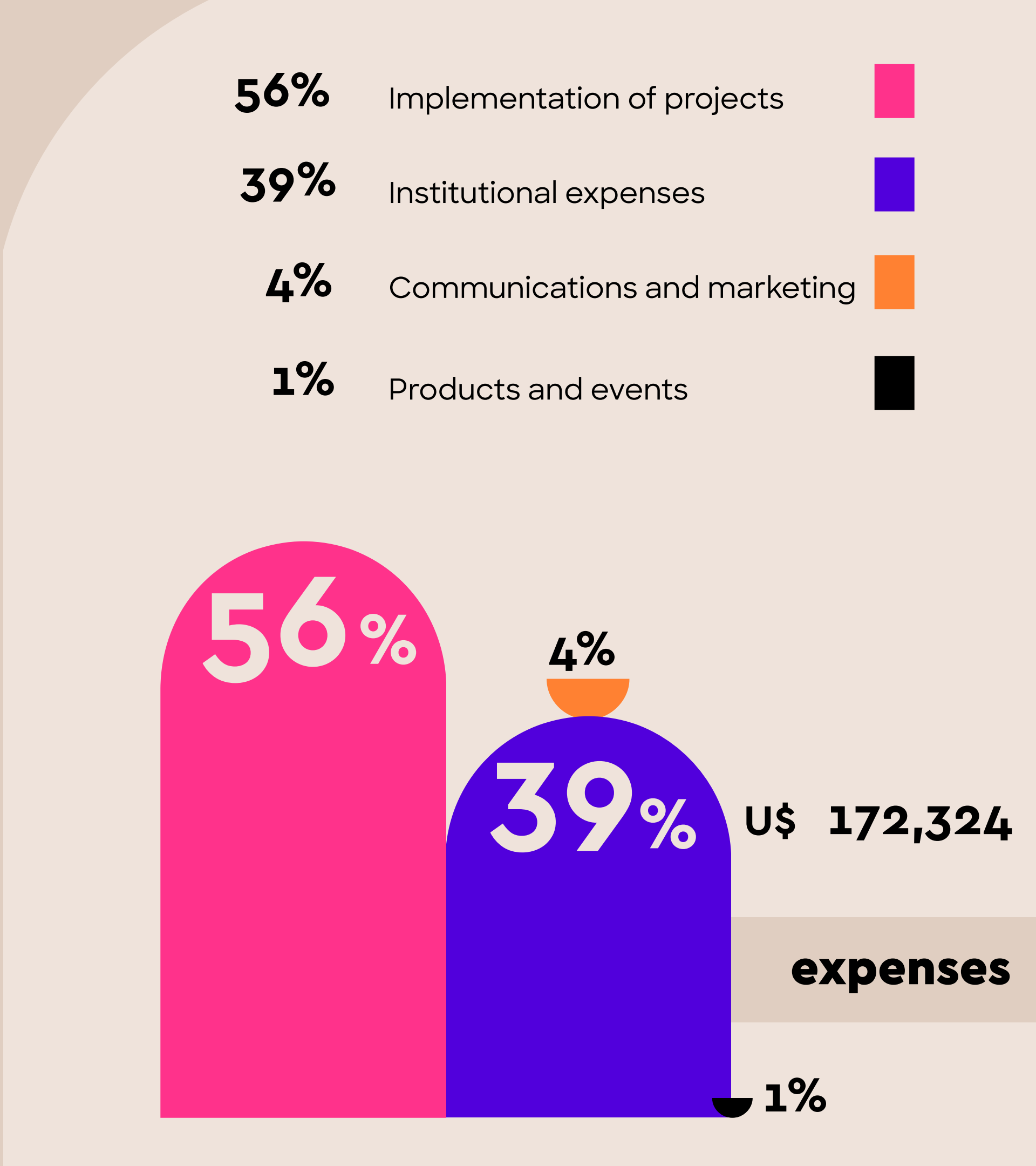
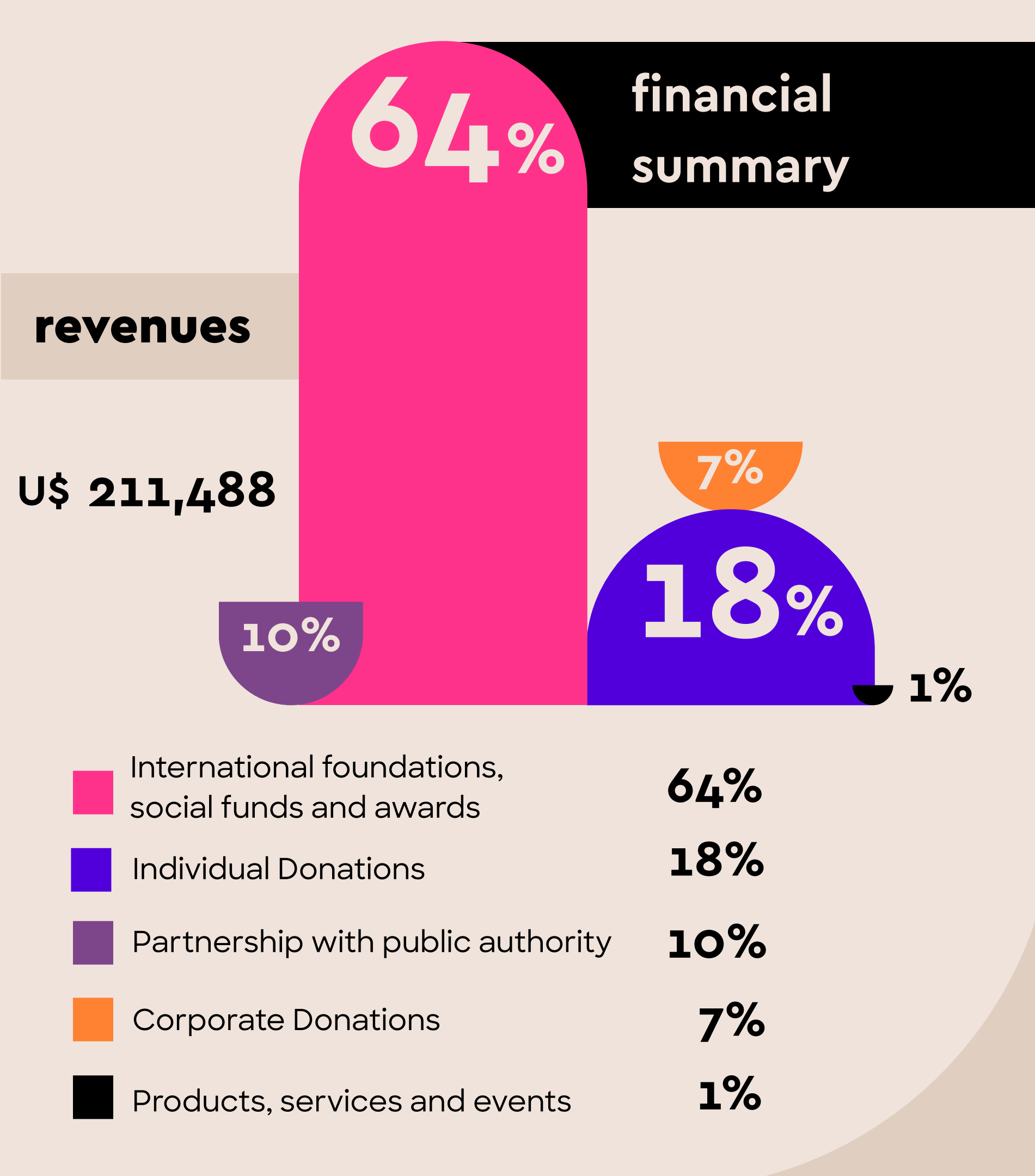


ammodo  
architecture award

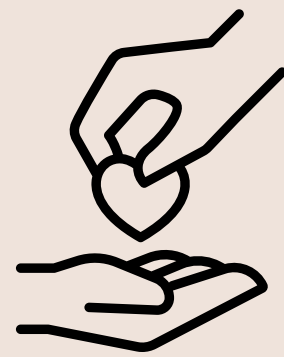
ammodo  
architecture  
award

social engagement axis







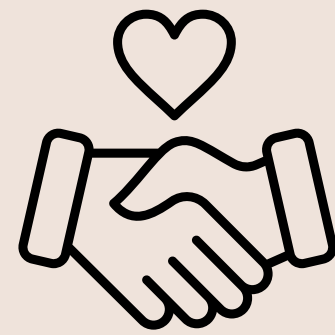


# 112

**monthly  
supporters**

Our network of **monthly individual supporters** represents the second main source of funding for the actions developed by IAMÍ. We have no words to express our gratitude for your trust and support! When we say that together we are stronger, this is what we mean: **with you, we can go much further!**





# 21



**SEAL  
partner  
companies**

We would like to thank our certificated **partner companies** and reaffirm our commitment to continue working towards the social transformation we want to see in our cities, in our society, and in the world.







The logo for re:arc, featuring the text "re:arc" in a bold, black, sans-serif font. The text is positioned within a large, orange, semi-circular shape that resembles a rising sun or a stylized arch. The shape is solid orange and has a flat bottom.

re:arc

## re:arc institute

the **re:arc institute** is an emerging philanthropic initiative committed to supporting architectures for planetary wellbeing.

In 2024, it's support to IAMÍ helped strengthen our institutional structure, enabled the implementation of technical advisory groups under AnP AT, and supported the consolidation of the AnP CO and AnP BIO projects.

*"Working at the intersection of climate action and architecture philanthropy, we fund community-led solutions that address the root causes and of climate breakdown."*



## IAMI and Urbel Partnership through a Parliamentary Amendment by State Representative Andréia de Jesus

In 2024, for the first time since its founding, AnP established a partnership with the public sector to implement Technical Advisory for Social House Improvements. This was also a milestone for the Urbanization and Housing Company of Belo Horizonte (Urbel), marking its first such collaboration since the revision of the city's Municipal Housing Policy.

The partnership was made possible through a parliamentary amendment by State Representative Andréia de Jesus, who allocated R\$120,000 (U\$ 21,097) to support the implementation of both the Collective and Individual Technical Assistance Programs (PAAT).

Ten families with monthly household incomes between zero and three minimum wages – residents of areas of social interest in the Vale do Jatobá region – were supported through this initiative. Additionally, ten women were trained to develop housing projects, manage construction processes, and carry out building works. **[Click here](#)** to access the Final Execution Report.





We also rely on our network of **partners and supporters**, whose ongoing commitment deepens our collective impact!



Quintal de Ideias . Aura da Luta . BioArquitetar . Erro99 . Escola Municipal Herbert José de Souza . Instituto Mulheres Amadas . Cruz Vermelha . Ju Berzo Fotografia . Movimento de Luta Nos Bairros Vilas e Favelas . Pedro Gomes . Programa VACA . Projeto TF/TK . Área de serviço . Cadence



## meet our team



### statutory directors

Carina Guedes, Cheyenne Miguel  
Luciana da Cruz e Cristina Lodi

### fiscal committee

Andréa Silveira, Juliana Berzoini e  
Polly Guedes

### institutional team

**managers** – Carina Guedes e Mariana Borel

**finance** – Vanessa Alcantara

**resource mobilization** – Renata Botelho e Polly Guedes

**logistics** – Maria Flor

**communications** – Brado Comunicação, Patrícia Prates,  
Juliana Freire

**consultants** – Andréa Silveira, Paula Castilho, Painá  
Consultoria

### local agents

Cheyenne Miguel e Luciana da Cruz

### coordinating architects

Carina Guedes, Clara Ciotto, Dayane Felix, Juliana Freire, Mariana Borel, Renata Botelho

### volunteer architects and engineers

Gabriella Torres, Marcela Angelim, Mariana Otávio, Naiara Nascimento e Raissa Sousa

### trainee

Laura Rodrigues

### hands-on instructors

Cenir Silva (master builder), Carla Renata (teaching assistant), Bruna de Souza (teaching assistant), Paula Peret (bioconstructor)

### construction team

Bruna de Souza, Cristiane Veríssimo, Claudinéia da Silva, Gleicilene de Oliveira, Tânia Nunes, Valquíria de Sousa, Verônica dos Santos

### volunteer psychologists

Daniela Gonzaga, Maria Ângela de Menezes, Rafaela Ferreira

arquitetura  
na periferia





**IAMÍ**  
**team**

**2024**



SUPPORT

WANT TO SUPPORT? VISIT:

[doe.arquiteturanaperiferia.org.br/donate](https://doe.arquiteturanaperiferia.org.br/donate)

thank you!

The continued support of those who believe in our work helps strengthen community-led processes, allowing more women to lead transformations in their own homes, lives, and neighborhoods.

together



we are

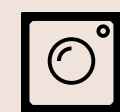
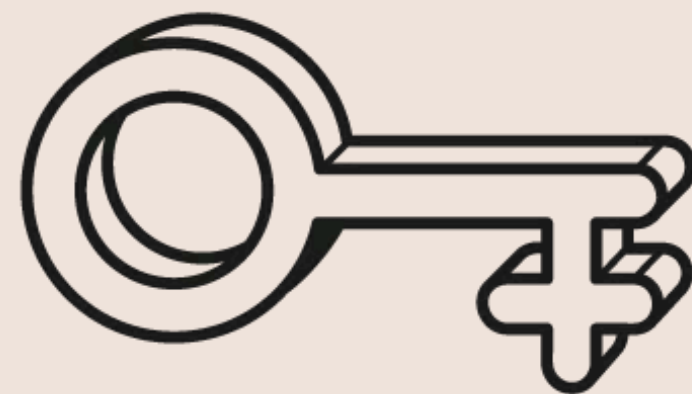


stronger





**[www.arquiteturaperiferia.org.br](http://www.arquiteturaperiferia.org.br)**



**@arquiteturaperiferia**



**[contato@arquiteturaperiferia.org.br](mailto:contato@arquiteturaperiferia.org.br)**



**+55 31 998401728**